

 Create pdf

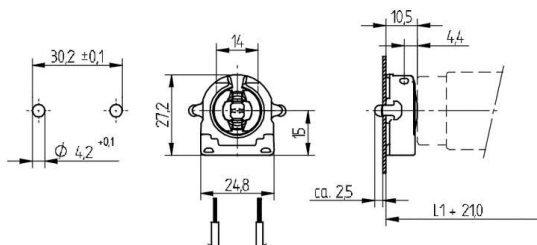
Lampholders and starter holders

26.422.1010

G13 End fixing lampholders



| colour | pkg. | wt. | part no. |
|--------|------|-----|----------------|
| white | 500 | 6 g | 26.422.1010.50 |



Lampholder thickness: 10.5 mm

Approval: additional cULus (660W /600V)








Wiring: through the body

Snap in pins

Housing: PC

Rotor: PBT

L1+210: Recommended dimension - The distance between the cut-outs and the tolerance should be governed by the dimensions of the respective lamps and luminaires.

| | | | | | | | | | |
|-------|--------|----------------|---|---|---|---|---|--|---|
| T 130 | Tm 110 | U out 500 V |  |  |  |  |  18 AWG 0.5 -1.0 mm ² |  0.5 - 1.1 |  |
|-------|--------|----------------|---|---|---|---|---|--|---|

Document generated on: Th, 9. February 2017 - 13:26